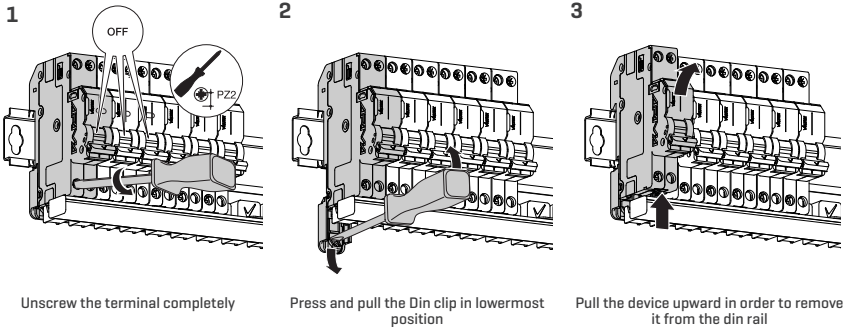


⚠ WARNING:

An RCBO must be installed by a licensed electrical contractor or electrician only in accordance with national and local building regulations and the Australian and New Zealand wiring rules AS/NZS 3000 latest edition thereof.

REMOVING RCBO FROM DIN RAIL, AFTER BUSBAR IS INSTALLED

The RCBO may be replaced without disconnecting the other products.



TESTING

RCBOs must be verified by test as having been correctly installed on installation.

- With the RCBO energised, verify the RCD function of the RCBO at least twice by operation of the test button or by use of special test equipment.
- In all cases, isolation of all switched poles shall be verified after the RCBO has operated to disconnect the designated circuit.
- Isolation of all poles shall be verified by voltage tests or, after removing supply, by continuity checks through each pole.

